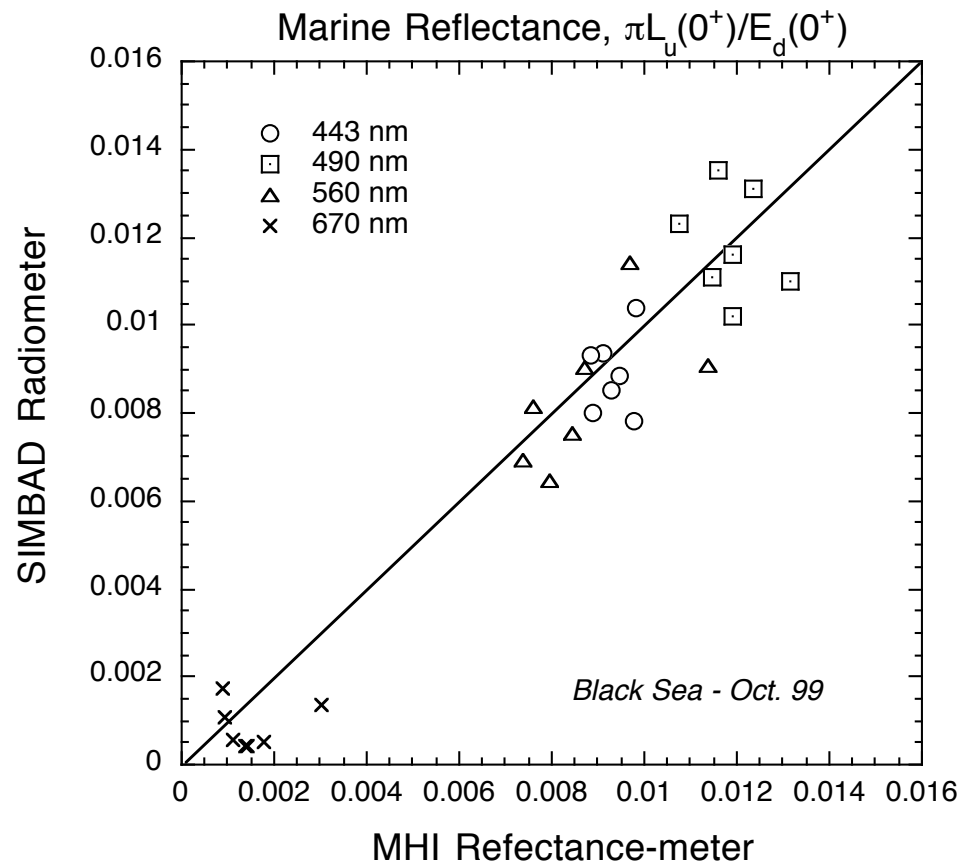
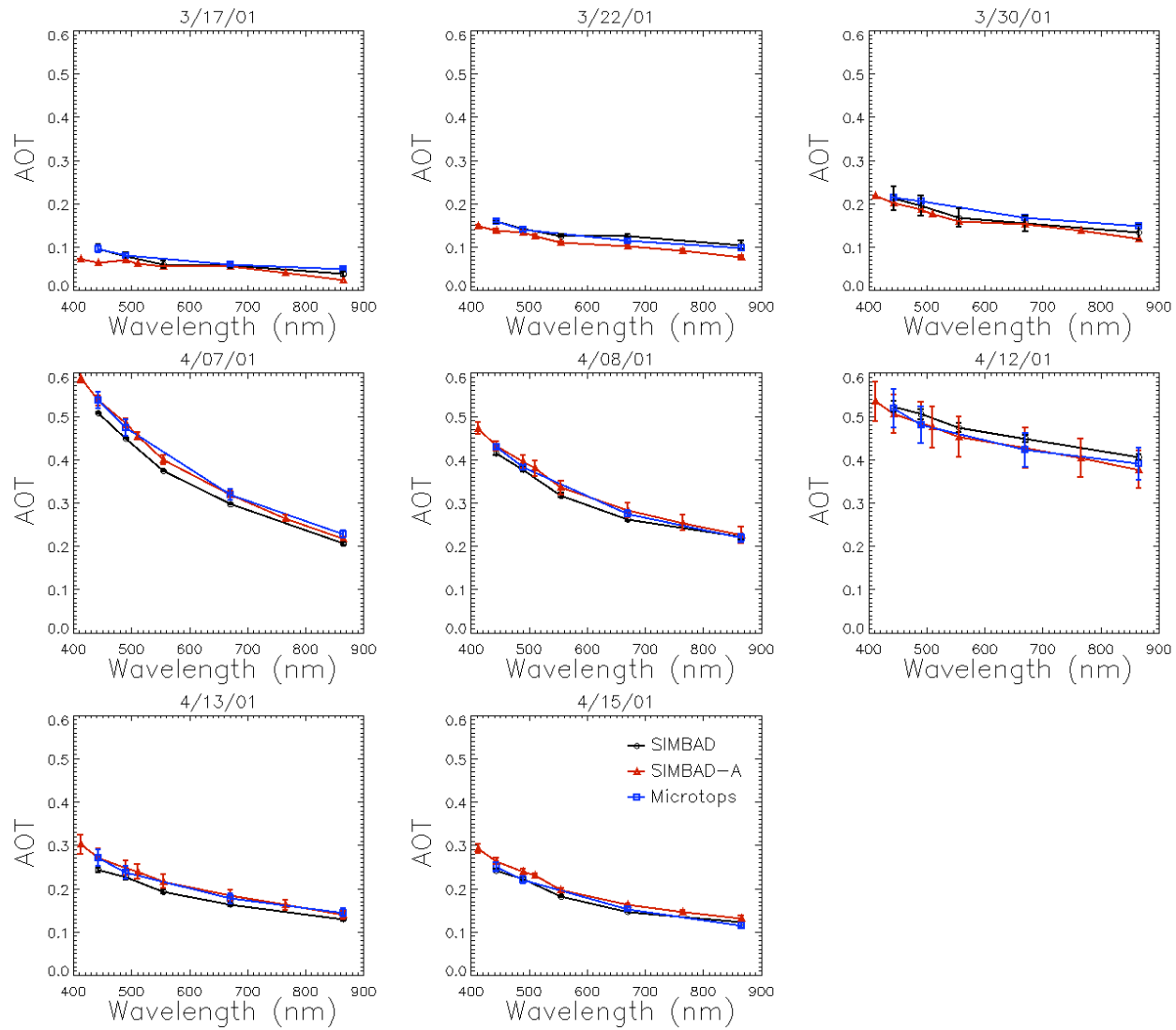


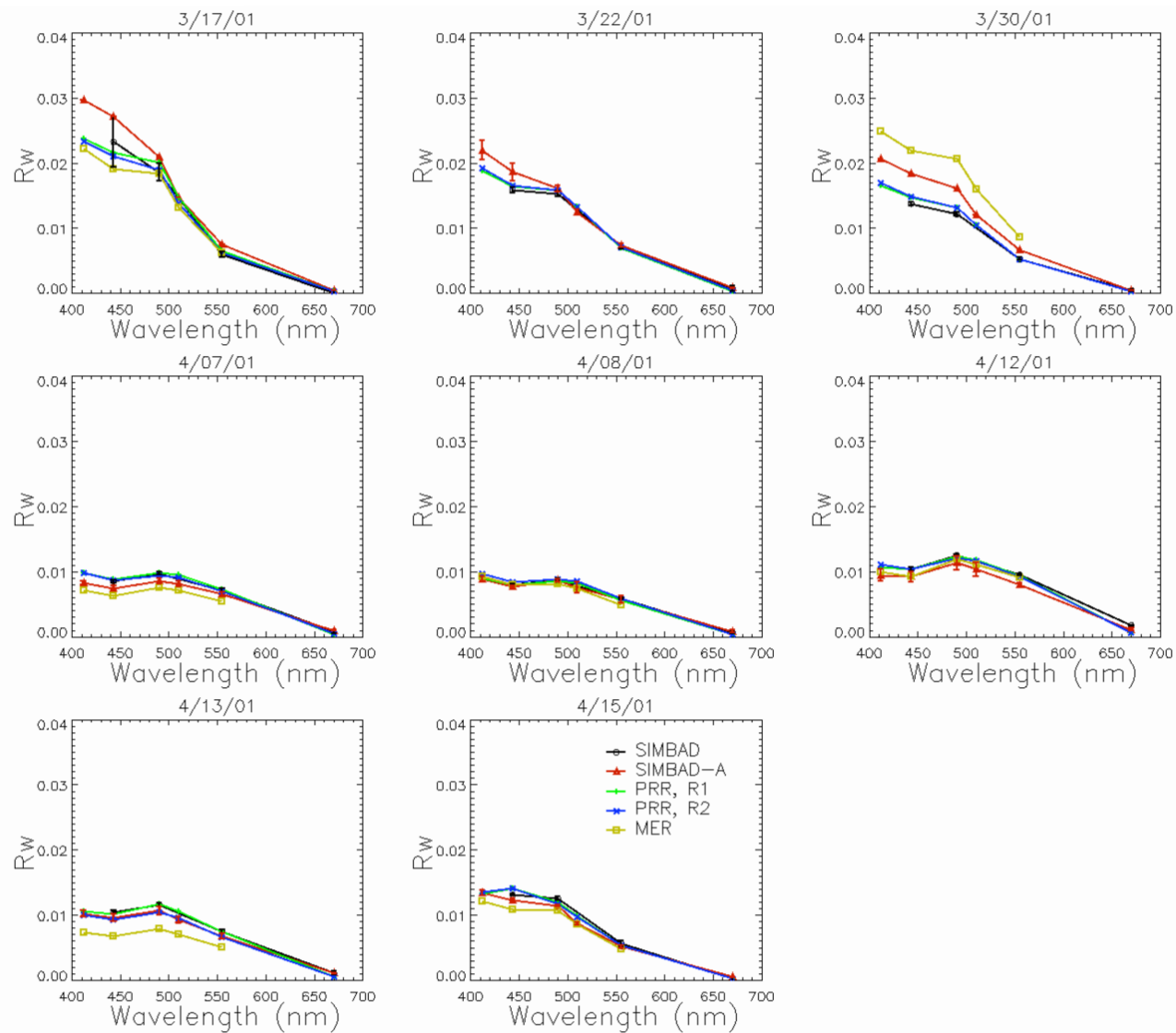
*Left: Comparison of SIMBAD and AATS aerosol optical thickness during ACE-2 (23 match-ups). Right: Comparison of SIMBAD and MER-2040 marine reflectance during various Calcofi campaigns (36 match-ups). (After Deschamps et al., Applied Optics, 2004).*



*Comparison of marine reflectance measured by the MHI reflectance-meter and the SIMBAD radiometer at seven stations in the Black Sea during the 3-24 October R/V Bilim cruise. (After Sancak et al., 2005.)*



*Aerosol optical thickness measured by SIMBAD, SIMBADA, and Microtops instruments during ACE-Asia.*



*Above-surface marine reflectance measured by SIMBAD, SIMBADA, MER, and PRR instruments during ACE-Asia. For PRR, marine reflectance is calculated using downwelling irradiance measured above the surface (R1) or below the surface after transfer across the air-sea interface (R2).*